



Time Series Study of Vegetation Cover of the Coastal Bhitarkanika National Park Region, Odisha, India Using Geospatial Technology

Sangita R. Chaudhary^{a*} and Ratna Trivedi^a

^a Department of Environmental Science, Faculty of Science, Shree Ramrishna Institute of Computer Education and Applied Science, Surat-395001, Gujarat, India.

Authors' contributions

This work was carried out in collaboration between both authors. Both authors read and approved the final manuscript.

Article Information

Open Peer Review History:

This journal follows the Advanced Open Peer Review policy. Identity of the Reviewers, Editor(s) and additional Reviewers, peer review comments, different versions of the manuscript, comments of the editors, etc are available here: <https://www.sdiarticle5.com/review-history/121845>

Original Research Article

Received: 20/06/2024
Accepted: 23/08/2024
Published: 29/08/2024

ABSTRACT

The research site is located in Bhitarkanika Wildlife Sanctuary in India's Kendrapara District, The Sanctuary covers an area of 672 km². An Advanced Remote Sensing and Geographical Information System techniques were used to study the changing patterns of Land Use and Land Cover from year 2009 to 2021. The study period covers was to analyze a 13-year period regarding its land use and land cover change in Bhitarkanika Wildlife Sanctuary. Satellite imageries for the gap of every 5-year interval respectively like 2009-2013, 2013-2017 and 2017-2021, satellite data were used to identify the changes. A significant pattern of change in the LULC was revealed with changes in open land area, agriculture land and vegetation cover and water body open land got reduced by 69.03% whereas agriculture lands got increased by 40.17%. In contrast, vegetation areas and water body decreased by 35.71% and 10.44%, indicating a trend toward land use changes, climate

*Corresponding author: Email: sangitachaudhary148@gmail.com;

Cite as: Chaudhary, Sangita R., and Ratna Trivedi. 2024. "Time Series Study of Vegetation Cover of the Coastal Bhitarkanika National Park Region, Odisha, India Using Geospatial Technology". *Asian Journal of Geological Research* 7 (3):257-67. <https://journalajoger.com/index.php/AJOGER/article/view/169>.

variability, and human activities. These changes highlight the impact of human activities on the landscape and emphasize the need for sustainable land management practices. The prediction model shows the probably increased water body and agriculture land by 0.25%, 4.131%. In other hand, vegetation is decreased by 2.38%. The result highlighted the changes in the spatial extent of the mangroves and other land use categories in the study areas as a result in due course of time.

Keywords: Remote sensing; land use and land cover (LULC); predictive modeling; mangrove dynamics.

1. INTRODUCTION

The changes in land use and land cover (LULC) trigger a series of consequences that affect various interconnected processes, ultimately disrupting the delicate balance of the Earth's ecosystems. These alterations could also reshape the physical landscape and distribution of different LULC categories [1,2]. The term "land cover" encompasses the physical and biological features that adorn the Earth's surface, including vegetation, water bodies, barren soil, and human-made structures such as buildings [3]. The patterns of land use are influenced by technological advancements, socioeconomic factors, and institutional frameworks, which are in turn shaped by ecological conditions, topography, and geological attributes [4]. These changes in land cover dynamics have profound impacts on climate, biogeochemical cycles, energy flows, and human welfare [5]. Urbanization and population growth exacerbate the conversion of extensive forested areas into alternative land use types.

2. MATERIALS AND METHODS

2.1 Study Area

Situated along India's eastern coastline, the Bhitarkanika Mangrove Ecosystem is renowned as one of the country's largest and most diverse mangrove forests. Covering a vast area between certain latitudes and longitudes, this unique environment comprises dense mangrove forests, intricate estuarine channels, expansive mudflats, and a rich variety of plant and animal species. It gained international recognition as a Ramsar site in 2002 due to its ecological significance. Located in the northeastern part of Odisha's Kendrapara District, the ecosystem is formed by the Brahmani, Dhamra, and Baitarani rivers' deltaic region. Initially established as a wildlife sanctuary in 1975, it was later expanded and declared a National Park in 1992, with a core area of 145 km² within a larger wetland spanning 672 km². The region experiences a tropical

monsoon climate, characterized by high humidity and heavy rainfall from June to September, followed by relatively warm temperatures during the dry season from October to May. These favorable conditions support the flourishing growth of mangrove forests and sustain a diverse range of plant and animal species, making Bhitarkanika a crucial sanctuary for biodiversity conservation.

2.2 Geospatial Data

Throughout this study, data obtained from both the Landsat series of satellite images, covering the period from 2009 to 2021 were used. Specifically employed Landsat 5 TM imagery from 2009 and Landsat 8 OLI_TIRS imagery from 2013, 2017, and 2021, with path/row 139/046 and cloud coverage less than 30%. Landsat TM data had a resolution of 30 meters, while OLI/TIRS data had a resolution of 15 meters once the panchromatic band was included (Table 1). These images were sourced from the United States Geological Survey (USGS) portal, Earth Explorer (<http://earthexplorer.usgs.gov/>). Subsequently, conducted geo-rectification and registration of the Landsat images at the source.

2.3 LULC Classification

After finishing the extraction and projection process for study area, merged the various subtypes of land-use data to define five distinct LULC categories: water bodies, vegetation, agricultural land, open land, and barren areas, as illustrated in Table 2. This classification was accomplished using the reclassifying tool within QGIS 3.26.3. also computed Normalized Difference Vegetation Indices (NDVI) for each dataset to quantify vegetation density. Among various LULC classification techniques, supervised classifications are used in which the user selects representative training samples from the image for each class of interest and assigns labels or categories to these samples [6]. The classifier then uses these labeled samples to

identify and classify similar pixels across the entire image. Following this, conducted a comprehensive analysis of NDVI changes across different time periods to understand temporal fluctuations in land cover and vegetation density [7-10].

2.4 Mangrove Forest Cover Change Analysis

The Modules for Land-Use Change Simulation (MOLUSCE) plugin within QGIS to examine changes in land use and land cover (LULC) over five-year intervals. This analysis resulted in four LULC change maps, showing how the landscape evolved over time. By organizing LULC data into rows and columns representing landscape categories for different years and created an area change and transition likelihood matrix. These tools, commonly used in LULC change analysis, help

to understand how both natural and human factors influence changes in land use and cover over time [11].

2.5 Prediction and Model Validation

The study utilized the CA-ANN technique within the MOLUSCE plugin to model transition potentials and simulate future scenarios. This method is preferred by many researchers due to its perceived effectiveness compared to linear regression [12]. MOLUSCE (Modules for Land Use Change Simulation) is a valuable tool for analyzing and modeling land use changes over time. It allows users to simulate various scenarios and assess the potential impacts of different factors on land use dynamics. Conducting a time series study spanning more than a decade helped us prepare a predictive model and project the LULC changes expected by 2030. To validate the model and ensure

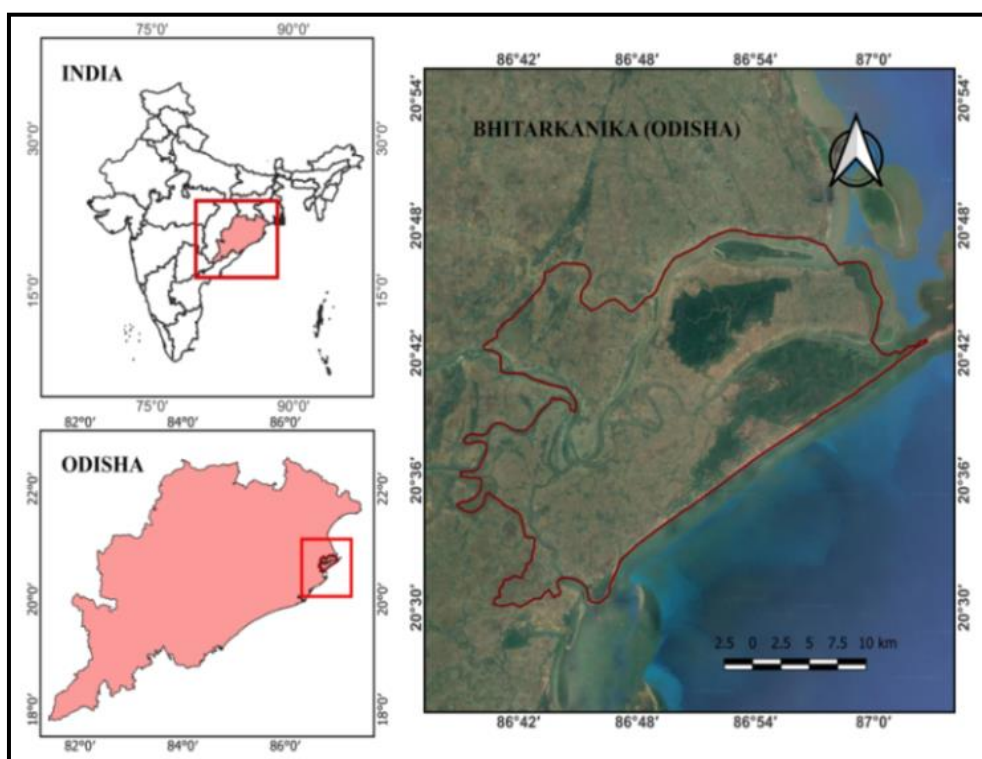


Fig. 1. Study area map: Bhitarkanika Mangrove Ecosystem, Odisha, India

Table 1. The characteristics of the remotely sensed data acquired from satellite sources

Years	Satellite	Sensor	Spectral Resolution	Path	Row
2009	Landsat-5	TM	30 meter	139	046
2013	Landsat-8	OLI_TIRS	15 meter	139	046
2017	Landsat-8	OLI_TIRS	15 meter	139	046
2021	Landsat-8	OLI_TIRS	15 meter	139	046

Table 2. Classification system of LULC

LULC types	Description
Water body	Rivers, lakes, ponds, and dams
Vegetation coverage	Different kinds of woodland areas
Agriculture	Agricultural, cultivated land, parks, open areas, and grazing area
Open land	Built-up area, residential, commercial, and other infrastructure
Barren land	All types of barren land

accuracy, the MOLUSCE plugin provides a kappa validation technique. This allows to compare the actual LULC images with the projected ones, ensuring reliability and precision in our assessments. After achieving satisfactory validation results, LULC data from 2010 and 2020 to forecast the LULC in 2030, as illustrated in Fig. 7.

3. RESULTS AND DISCUSSION

The study analyzed the NDVI for each dataset spanning from 2009 to 2021 to understand vegetation dynamics over time. LULC maps were created based on NDVI data, with accuracies ranging from 93.52% in 2009, 91.94% in 2013, 96.66% in 2017 and 91.33% in 2021. NDVI, a remote sensing metric, gauges vegetation health and density by measuring the reflectance of

near-infrared and red light. NDVI-based LULC maps were generated for each year and compared with other maps to analyze temporal changes in land cover types over the specified period.

Table 2 displays notable alterations in vegetation cover within the study area. A change detection matrix has been compiled for various time periods based on the NDVI outcomes, highlighting significant shifts in vegetation dynamics over time. Changes between 2009-2021 have been shown in Fig. 6.

The spatial coverage of water bodies showed a fluctuating pattern over the years, increasing from 10.07% in 2009 to 11.63% in 2013, after gradually decreasing to 10.44% in 2021. This variation could be attributed to factors like

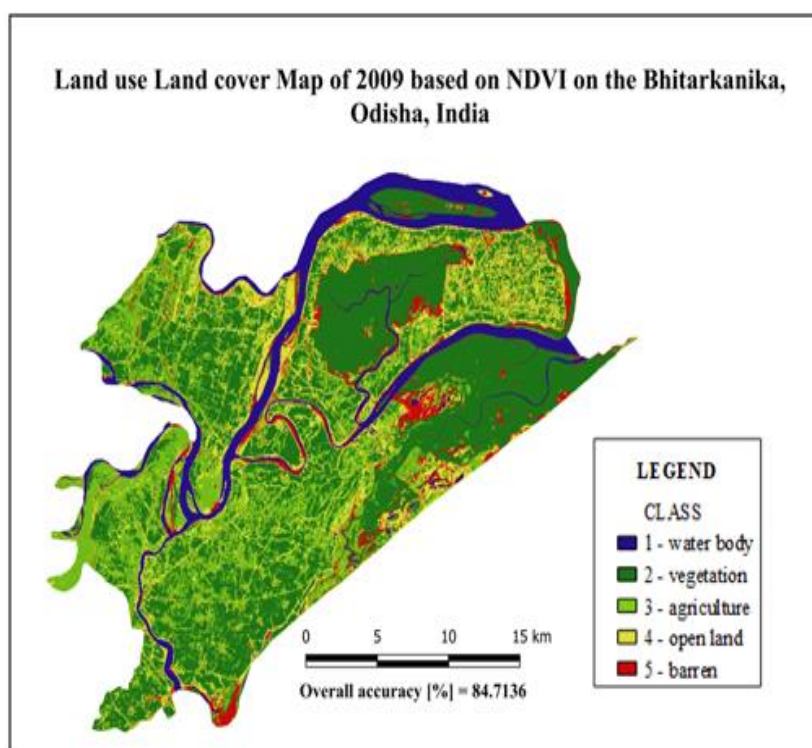


Fig. 2. LULC map of 2009 based on NDVI

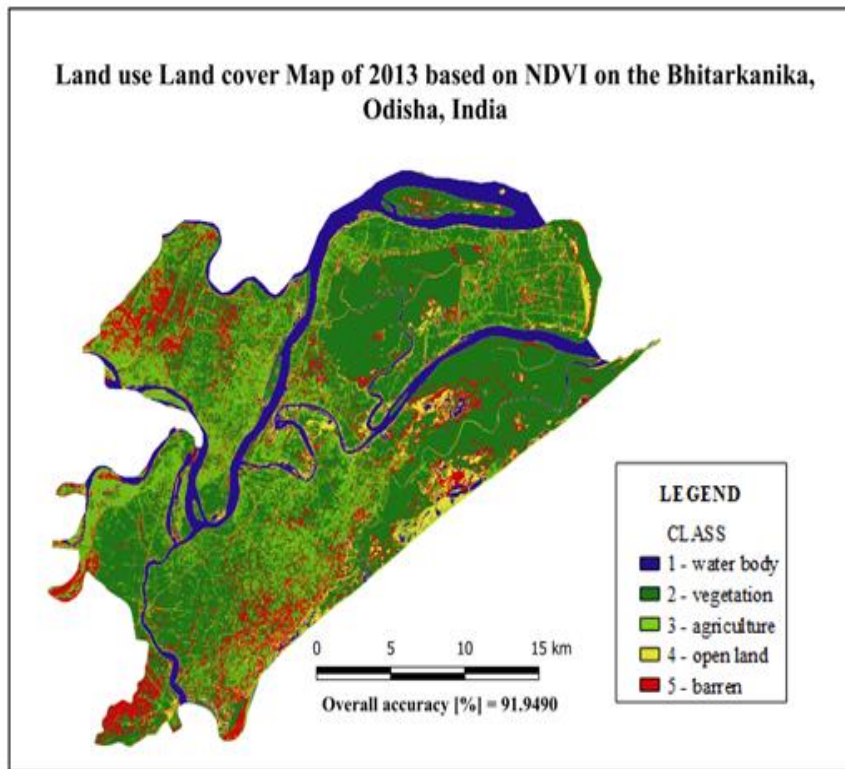


Fig. 3. LULC map of 2013 based on NDVI

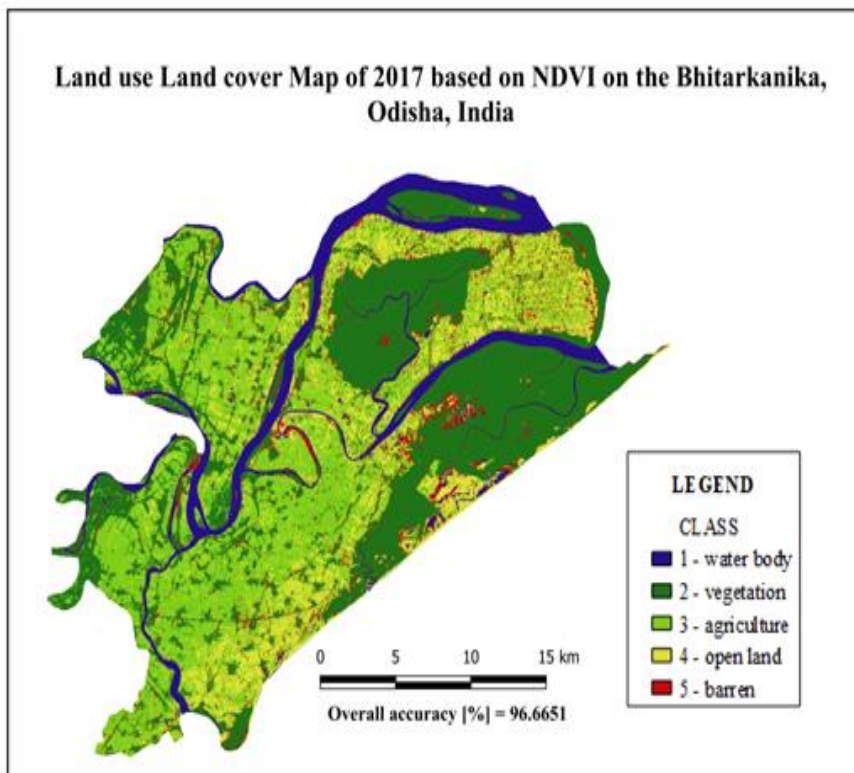


Fig. 4. LULC map of 2017 based on NDVI

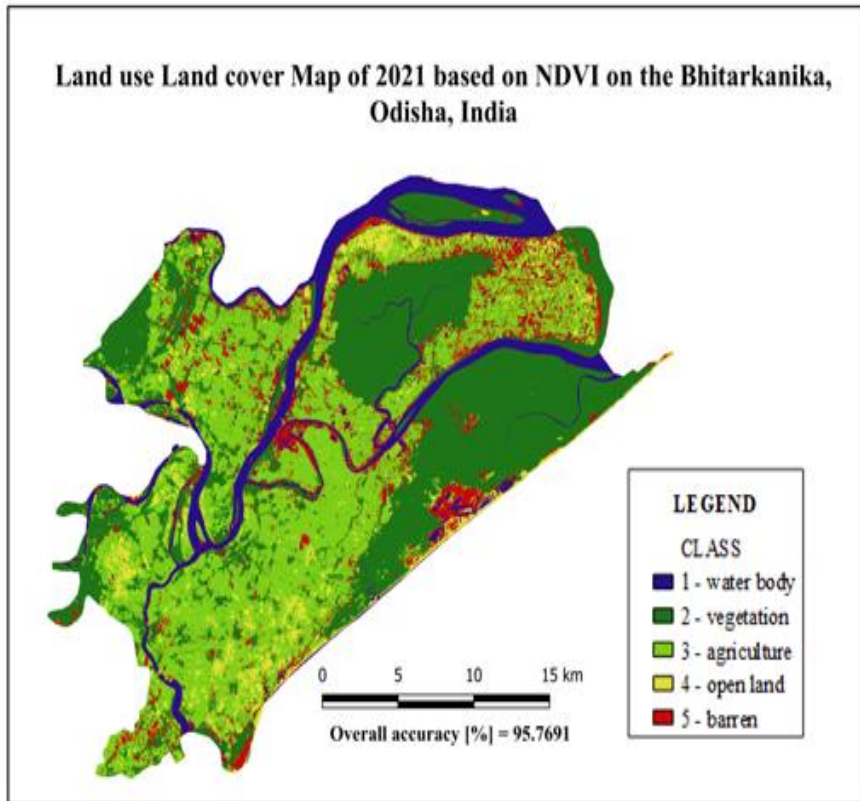


Fig. 5. LULC map of 2021 based on NDVI

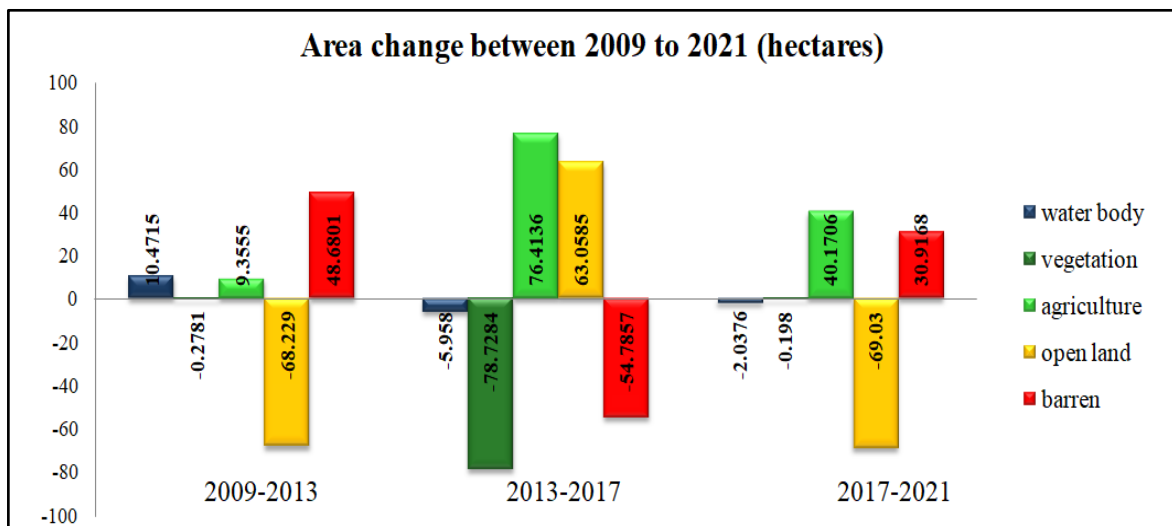


Chart 1. The chart compares the alterations in land use between the periods 2009-2013, 2013-2017, and 2017-2021, illustrating the changes in area percentages over time

flooding and seasonal changes observed during the imaging process on study area. On the other hand, decline in dense vegetation coverage from 47.43% in 2009 to 35.71% in 2021 suggests a significant alteration in vegetation patterns, possibly attributable to a combination of factors

including pollution, land conversion, climate change, natural disturbances, or overexploitation. Concurrently, agricultural land expanded significantly from 20.65% in 2009 to 39.32% in 2021, highlighting a substantial transformation in land use dynamics over the years.

Table 3. Change assessment in individual years (2009, 2013, 2017 and 2021)

NDVI change analysis of Bhitarkanika area (2009-2021), Odisha						
Class	Water body	Vegetation coverage	Agriculture	Open land	Barren land	Total
Year-2009						
Area in hectares	67.9761	319.8816	139.284	109.6956	37.548	674.3853
Area Percentage	10.0797	47.4330	20.65347	16.26601	5.56773	100
Year-2013						
Area in hectares	78.4476	319.6035	148.6395	41.4666	86.2281	674.3853
Area Percentage	11.63246	47.39182	22.04074	6.1488	12.78618	100
Year-2017						
Area in hectares	72.4896	240.8751	225.0531	104.5251	31.4424	674.3853
Area Percentage	10.74899	35.71773	33.37159	15.49931	4.662379	100
Year-2021						
Area in hectares	70.452	240.8553	265.2237	35.4951	62.3592	674.3853
Area Percentage	10.44685	35.71479	39.32821	5.263326	9.246821	100

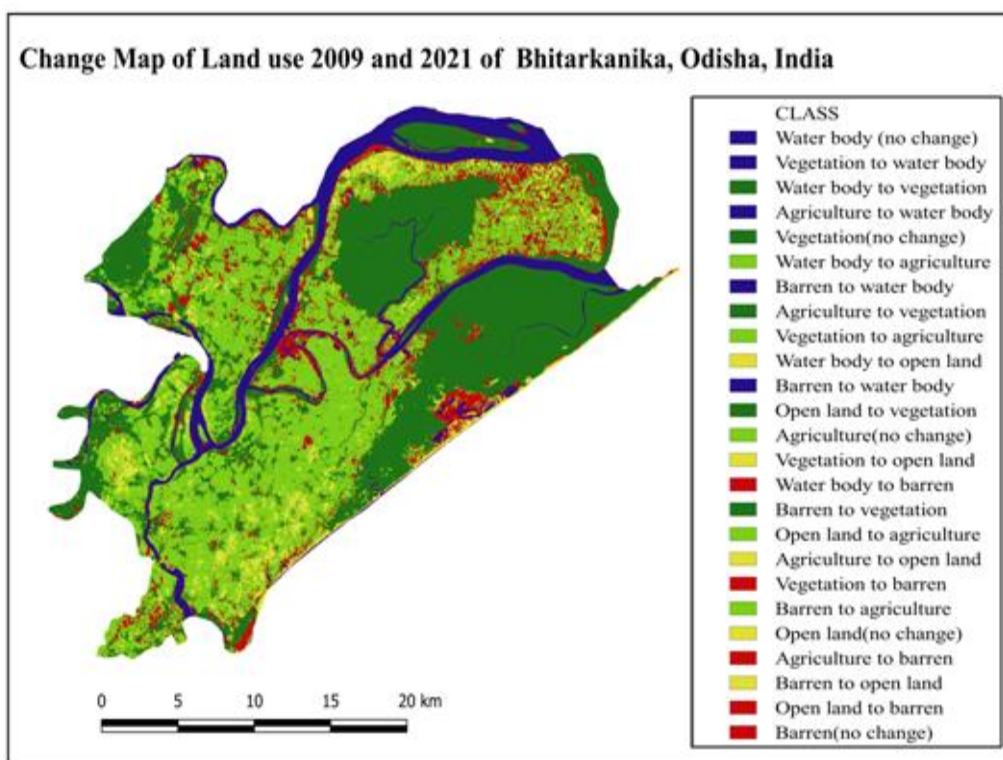


Fig. 6. Change area between 2009 and 2021

Table 4. Temporal changes 2021-2030

Class	2021 area in hectares	2030 area in hectares	Δ in hectares	2021%	2030%	Δ %
water body	70.45	72.15	1.70	10.446	10.699	0.25223
vegetation	240.86	224.77	-16.09	35.714	33.329	-2.38577
agriculture	265.22	293.09	27.86	39.328	43.459	4.131763
open land	35.50	27.70	-7.79	5.263	4.107	-1.15545
barren	62.36	56.68	-5.68	9.246	8.404	-0.84277

Kappa value = 94.29%; Overall accuracy = 0.91

Throughout the observed years, there has been a discernible decrease in the overall area categorized as non-vegetated, with percentages declining from 21.82% in 2009 to 14.5% in 2021. This trend mirrors shifts in land use dynamics, such as urbanization, agricultural expansion, and infrastructure development, which have encroached upon formerly non-vegetated regions, thereby affecting the surrounding mangrove ecosystems.

The future land use and land cover (LULC) changes for the year 2030 have been forecasted using transition probabilities matrix, analyzing the probable percentages of changes from 2021 to 2030. Cellular Automata Artificial Neural Network (CA-ANN) methods were employed to provide insights into both the quantity of change and the

spatial distribution of LULC prediction in the study area. The model is considered validated when the Kstandard (overall kappa) score surpasses 70%. A k-index greater than 80% indicates strong alignment between the projected and actual LULC maps, surpassing the minimum acceptable standard. In this case, the indices exceeding 80% signify a commendable overall agreement and predictive accuracy of the model.

Over the span of the decade from 2021 to 2030, significant changes in land cover are anticipated within the study area. While water bodies are predicted to experience a marginal increase of around 10.44% in 2021 to 10.69% in 2030, vegetation cover is dropping from 35.71% in 2021 to 33.32% in 2030. Conversely, agricultural land is forecasted

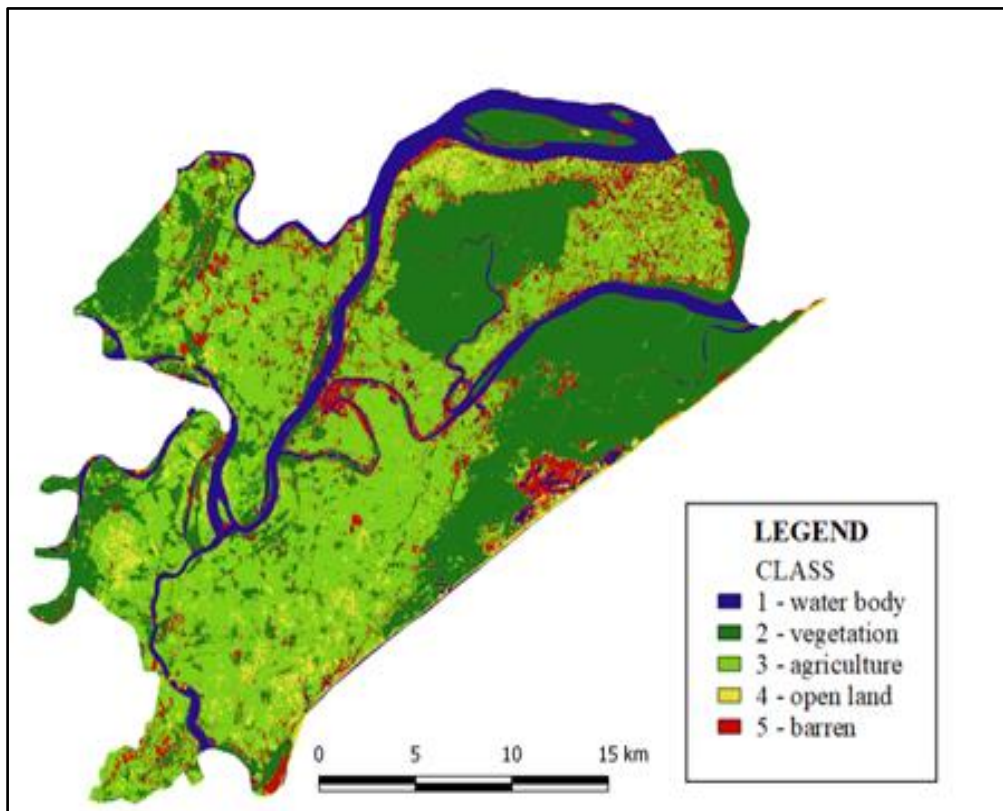


Fig. 7. Projected LULC for 2030

to expand notably, with an estimated increase of about 4.13%. However, open land and barren areas are both projected to decline, with open land decreasing by approximately 1.15% and barren land decreasing by approximately 0.84% by 2030. Detailed insights into these changes are provided in Fig. 7 and Table 4, illustrating the evolving landscape over time. These predictions highlight potential shifts in land use dynamics and emphasize the importance of informed land management strategies to address emerging challenges and promote sustainable development in the region.

The changes driving alterations in the Bhitarkanika ecosystem can be broadly classified into two main categories: natural and human-induced factors. Natural occurrences like tropical cyclones, severe flooding, water logging, and shifts in shoreline dynamics play a significant role in the depletion of vegetation cover. Conversely, human activities such as the construction of aquaculture ponds, settlements on reclaimed land, and urbanization further exacerbate the decline in vegetation. Bhitarkanika has witnessed notable flooding events in various years, including 1995, 1999, 2001, 2003, 2005, 2006, 2007, 2008, 2009, 2011, and 2013. These

floods, often triggered by heavy rainfall and tropical cyclones, have had far-reaching consequences on the area's ecosystems and local communities.

4. CONCLUSION

This study marks an initial attempt to forecast the future trajectory of the Bhitarkanika mangrove ecosystem by analyzing multiple Land Use and Land Cover (LULC) maps to evaluate mangrove degradation. Examination of historical land cover maps derived from Landsat 5 and 8 imagery unveiled a decline in dense mangrove coverage alongside an expansion of open mangrove and agricultural areas. Despite conservation efforts, projections suggest a potential decrease in dense mangrove cover to as low as 2.30% by 2030. The increasing spread of settlements is placing significant strain on the dynamic coastal environment. Since people are mostly depend on the mangrove forest for their fundamental sustenance needs, the people were usually unable to perform species and size selection. Rather, they grab whatever is most readily available to them [13]. It is clear from the map, which was produced over a 13-year period, that much of Bhitarkanika National Park has been

impacted by human activities including agriculture, aquaculture, and habitation. Our results also show that land reclamation for agricultural [14,15], human activity, and unsustainable resource use practices like aquaculture are the main reasons of Bhitarkanika's yearly loss in mangrove area. Understanding the rate at which land use is changing over time and space will enable us to determine the causes of these changes and be very helpful in building models for the area's regional and spatial patterns as well as future implications of these changes. As remote sensing technology advances and sensor resolution increases from 1 km to 1 m spatial resolution, we will be able to better understand changes in land use and land cover in this area (Bhitarkanika National Park) and develop models for land use patterns there. Supporting systems such as GIS will also enable us to verify our current findings.

DISCLAIMER (ARTIFICIAL INTELLIGENCE)

Author(s) hereby declare that generative AI technologies used such as chatgpt 4omini for sentence framing and editing of manuscripts.

ACKNOWLEDGEMENTS

Authors are highly thankful to R Trivedi, HOD of Environmental Science, Sarvajani University, Gujarat, India for the help and support providing valuable suggestions

COMPETING INTERESTS

Authors have declared that no competing interests exist.

REFERENCES

1. Dregne HE, Chow NT. Global desertification dimensions and costs. In: Degradation and restoration of arid lands. Lubbock: Texas Tech. University; 1992.
2. Behera RN, Samal S, Pradhan NC, Palei, Sethy KM. Geo-spatial analysis of land use and land cover in Bhitarkanika Wildlife Sanctuary, Odisha, e-planet; 2021.
3. Ellis E, Robert P. Land use and landcover change. In: Encyclopedia of Earth. Eds. Cutler J. Cleveland (Washington, D.C.: Environmental Information Coalition, National Council for Science and the Environment); 2007.
4. Rai SC, Sharma E, Sundriyal RC. Conservation in the Sikkim Himalaya: traditional knowledge and land-use of the Mamlay watershed, Environ. Conserv; 1994.
5. Vitousek PM, Mooney HA, Lubchenco J, Melillo JM. Human domination of earth's ecosystems. Science; 1997. DOI: doi.org/10.1126/science.277.5325.49
6. Duong PC, Nauditt A, Nam H, Phong NT. Assessment of climate change impact on river flow regimes in The Red River Delta, Vietnam: A case study of the Nhue-Day River Basin, Journal of Natural Resource and Development; 2016. DOI: doi.org/10.5027/jnrd.v6i0.09
7. Ojima DS, Galvin KA, Turner BLI. The global impact of land-use change. Bio Science; 1994. DOI: doi.org/10.2307/1312379
8. Gashaw T, Tulu T, Argaw M, Worqlul AW. Modeling the hydrological impacts of land use/land cover changes in the Andassa watershed, Blue Nile Basin; 2018.
9. Gismondi M. MOLUSCE-an Open Source Land Use Change Analyst; 2013. Available:https://2013.foss4g.org/conf/programme/presentations/107/ (accessed on 17 July 2021).
10. Chauhan HB, Nayak S. Land use/ land cover changes near Hazira region, Gujarat using Remote sensing satellite data. Jr. Ind. Soc. Remote Sensing; 2005. DOI: doi.org/10.1007/BF02990012
11. Thakur RR, Kumar P, Palria S. Maharshi Dayanand Saraswati University, Ajmer, Rajasthan, India. Monitoring changes in vegetation cover of Bhitarkanika Marine National Park Region, Odisha, India Using Vegetation Indices of Multidate Satellite Data, Indian Journal of Geo Marine Sciences; 2019.
12. El-Tantawi AM, Bao A, Chang C, Liu Y. Monitoring and predicting land use/cover changes in the Aksu-Tarim River Basin, Xinjiang-China. Environ. Monit. Assess; 2030.
13. Shanti Shrestha, Isabel Mirandac, Maria Luisa, Escobar Pardoc. Identifying and Forecasting Potential Biophysical Risk Areas within a Tropical Mangrove Ecosystem using Multi-Sensor Data, International journal of applied earth observation and geoinformation; 2019. DOI: doi.org/10.1016/j.jag.2018.09.017.

14. Ewel KC, Twilley RR, Ong JE. Different kinds of mangrove forests provide different goods and services, *Global Ecology and Biogeography Letters*; 1998.
15. Roy ES. Mangrove vegetation stratification using Salyut-7 photographs. *Geocarto Intl.* 1989;3:31-47. Available: <https://doi.org/10.1080/10106048909354219>

Disclaimer/Publisher's Note: The statements, opinions and data contained in all publications are solely those of the individual author(s) and contributor(s) and not of the publisher and/or the editor(s). This publisher and/or the editor(s) disclaim responsibility for any injury to people or property resulting from any ideas, methods, instructions or products referred to in the content.

© Copyright (2024): Author(s). The licensee is the journal publisher. This is an Open Access article distributed under the terms of the Creative Commons Attribution License (<http://creativecommons.org/licenses/by/4.0>), which permits unrestricted use, distribution, and reproduction in any medium, provided the original work is properly cited.

Peer-review history:

The peer review history for this paper can be accessed here:

<https://www.sdiarticle5.com/review-history/121845>