

# CD10 expression in urinary bladder urothelial carcinoma is associated with high-tumor grade and stage

Jaudah Al-Maghrabi

## ABSTRACT

**Objectives:** Primary urinary bladder carcinoma is a common cancer worldwide. There is limited published data about CD10 immunoeexpression pattern in urothelial bladder carcinoma (UBC). This study aims to examine CD10 immunoeexpression in UBC and evaluate its relationship with clinicopathological parameters.

**Methods:** The retrospective study examined 130 samples of UBC tissue and 30 samples of non-neoplastic urothelial bladder tissue, which were obtained from the Anatomic Pathology Department, King Abdulaziz University, Jeddah, Saudi Arabia. The project started in June 2019 and completed in February 2021. Tissue microarrays (TMA) were prepared from paraffin blocks and tissue sections prepared from the recipient blocks were used for immunohistochemistry studies utilizing CD10 antibody. The immunostaining results were recorded and analyzed.

**Results:** Positive staining of CD10 was observed in 64 (49%) cases of UBC and was not detected in any non-neoplastic urothelium samples. CD10-positive staining was identified in 36.7% and 66.7% of low and high-grade tumors, respectively. There was an association between positive CD10 immunostaining and high tumor grade ( $p=0.006$ ) and muscularis propria invasion ( $p=0.007$ ). There was no association between CD10 immunoeexpression and age, gender, nodal and distant metastasis, lymphovascular invasion, and tumor recurrence. CD10 immunoeexpression was not associated with the probabilities of overall survival (log rank 1.663,  $p=0.197$ ) or disease-free survival (log rank 1.637,  $p=0.201$ ).

**Conclusions:** In UBC, CD10 immunoeexpression is associated with higher tumor grade and muscle invasion, but it is not associated with patient survival or other clinicopathological parameters. CD10 immunoeexpression cannot be used as a biomarker for poor prognosis in UBC.

**KEYWORDS:** CD10 immunoeexpression, Urinary Bladder Carcinoma, Grade Stage Survival.

doi: <https://doi.org/10.12669/pjms.39.1.6268>

**How to cite this:** Al-Maghrabi J. CD10 expression in urinary bladder urothelial carcinoma is associated with high-tumor grade and stage. *Pak J Med Sci.* 2023;39(1):192-197. doi: <https://doi.org/10.12669/pjms.39.1.6268>

This is an Open Access article distributed under the terms of the Creative Commons Attribution License (<http://creativecommons.org/licenses/by/3.0>), which permits unrestricted use, distribution, and reproduction in any medium, provided the original work is properly cited.

- Jaudah Al-Maghrabi  
Department of Pathology,  
Faculty of Medicine,  
King Abdulaziz University,  
Jeddah, Saudi Arabia  
Department of Pathology,  
King Faisal Specialist Hospital and Research Centre,  
Jeddah, Saudi Arabia.

Correspondence:

Prof. Jaudah Al-Maghrabi, MD, MSc, FRCPC, FCAP.  
Professor and Consultant Pathologist,  
Pathology Department,  
Faculty of Medicine,  
King Abdulaziz University,  
P.O. BOX 80205,  
Jeddah 21589, Kingdom of Saudi Arabia.  
Email: [jalmgrabi@kau.edu.sa](mailto:jalmgrabi@kau.edu.sa)  
[jalmaghrabi@hotmail.com](mailto:jalmaghrabi@hotmail.com)

- \* Received for Publication: February 26, 2022
- \* 1<sup>st</sup> Revision Received: April 25, 2022
- \* 2<sup>nd</sup> Revision Received: October 22, 2022
- \* Final Revision Accepted: November 2, 2022

## INTRODUCTION

Urothelial bladder carcinoma (UBC), also known as Transitional cell carcinoma (TCC), is the most common primary urinary bladder carcinoma. In Saudi Arabia, UBC represents 3.8% of cancers in males.<sup>1</sup> There is limited published data about the relationship between CD10 immunoeexpression and clinicopathological parameters in UBC patients. CD10 has been reported to be associated with tumor grade and stage in urothelial carcinoma and to be a sign of poor prognosis. However, the relationship between CD10 immunoeexpression and patient survival is very limited and has only been evaluated in three previous studies.<sup>2-4</sup> There have been no studies in Saudi Arabia regarding the pattern of CD10 immunoeexpression in bladder cancer. Therefore, this study evaluates the relationship between CD immunoeexpression and clinicopathological parameters, including patient survival, in a relatively large sample of urothelial carcinomas.

## METHODS

A total of 130 bladder urothelial carcinomas specimens were investigated and examined by immunohistochemical staining along with 30 normal urothelial tissue samples. The patients' clinical data and pathological blocks were collected from the Anatomic Pathology Department at King Abdulaziz University Hospital, Jeddah, Saudi Arabia. Tumor grades were reviewed and reclassified according to the World Health Organization's classification as low- or high-grade urothelial carcinomas.<sup>5</sup> Stages of tumors were reviewed and classified according the cancer staging atlas of the American Joint Committee On Cancer.<sup>6</sup> A summary of clinicopathological data is shown in Table-I. Approval of the TMA study was obtained from the Institutional Biomedical Research Ethics Committee (Reference No 1127-13). The process of the was in accordance with the revised Declaration of Helsinki, 2000. As routine at our institution, an informed written consent was obtained from each patient to obtain permission to utilize their pathological tissue specimens for laboratory studies.

The project started in June 2019 and completed in February 2021.

**Tissue Microarray:** The tissue microarray (TMA) was prepared as described.<sup>7,8</sup> Histopathology slides of primary UBC and of non-neoplastic urothelial bladder tissue were reviewed and selected areas were marked. Areas that showed poor cellular preservation, necrosis, autolysis, tissue artefacts, and the area that contained predominant stromal tissue were avoided. Areas of the donor paraffin blocks that correspond to the selected sections were used to obtain two cores of neoplastic and non-neoplastic tissue. The cores were then inserted into recipient blocks using TMA machine (TMA Master 1.14 SP3 from 3D Histech Ltd., Budapest, Hungary). Sections from the recipient TMA blocks with a 4- $\mu$ m-thickness were used for immunohistochemistry studies.

**Immunohistochemistry:** Constructed TMAs of paraffin-embedded tissue blocks were cut and mounted on slides positively charged (Leica Microsystems Plus Slides). Immunohistochemistry was done utilizing an automated immunostainer (Benchmark ULTRA, Ventana® Medical Systems Inc., Tucson, AZ, USA) with a mouse

Table-I: Clinicopathological parameters of tumors (n=130).

Parameter	Number (%)	CD10 Immunoexpression		P value	
		Negative	Positive		
Gender	Male	109 (83.4%)	58 (53.2%)	51(46.7)	0.233*
	Female	21 (16.2%)	8 (38.1%)	13 (61.9%)	
Age	< 60 years	55 (42.3%)	29 (52.7%)	26 (47.3%)	0.594*
	≥ 60 years	75 (57.7%)	37 (49.3%)	38 (50.7%)	
Grade	Low grade	60 (46.2%)	38 (63.3%)	22 (36.7%)	0.006*
	High grade	70 (53.8%)	28 (44.4%)	42 (66.7%)	
Muscle invasion	Negative	63 (48.5%)	40 (63.5%)	23 (36.5%)	0.007*
	Positive	60 (46.1%)	23 (38.3%)	37 (61.7%)	
	Unknown	7 (5.4%)	3 (42.9%)	4 (57.1%)	
Nodal metastasis	Negative	112 (86.2%)	59 (52.7%)	53 (47.3%)	0.202*
	Positive	12 (9.2%)	4 (33.3%)	8 (66.7%)	
	Unknown	6 (4.6)	3 (50%)	3 (50%)	
Distant metastasis	Negative	123 (87.7%)	62 (50.4%)	61 (49.6%)	0.698*
	Positive	7 (7.7%)	4 (57.1%)	3 (42.9%)	
	Negative	114 (87.7%)	60 (52.6%)	54 (47.4)	
Lymphovascular invasion	Positive	10 (7.7%)	3 (30%)	7 (70%)	0.169*
	Unknown	6 (4.6)	3 (50%)	3 (50%)	
	Negative	85 (65.4%)	49 (57.6%)	36 (42.4%)	
Local disease recurrence	Positive	45 (34.6%)	20 (44.4%)	25 (55.6)	0.191*

\* Chi-Square Test.

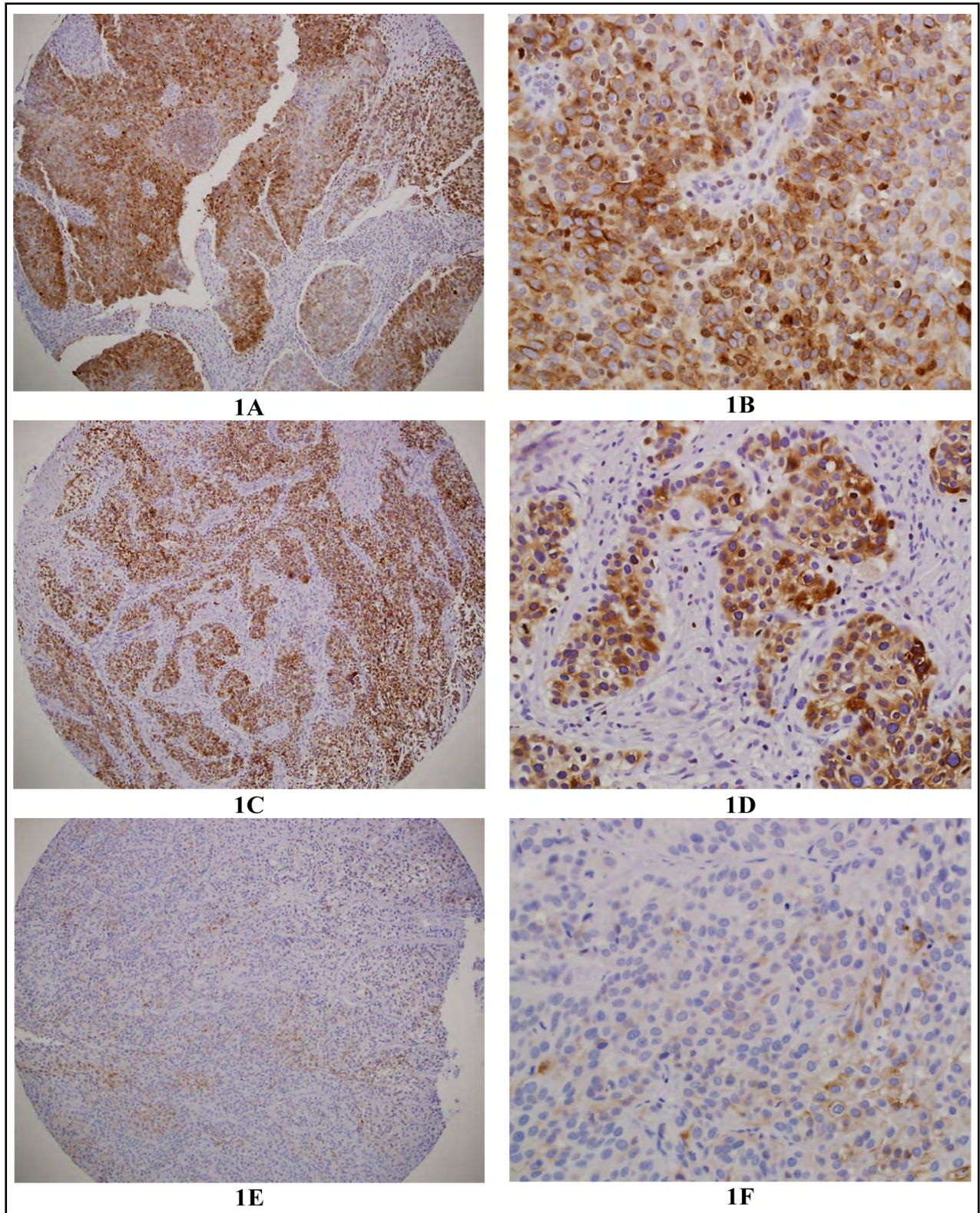


Fig.1: CD10 immunostaining.

(A) Section from high grade urothelial bladder carcinoma showing strong positive immunostaining (X100). (B) High power (X400). (C) Section from low grade urothelial bladder carcinoma showing strong positive immunostaining (X100). (D) High power(X200). (E) Section from low grade urothelial bladder carcinoma showing focal weak CD10 immunostaining(X100). (F) High power(X100).

Table-II: Categories of CD10 immunohistochemistry staining in bladder urothelial carcinoma and non-neoplastic urothelial tissue.

	Primary tumor (n=130)	Normal urothelium (n=30)	p value
CD10 negative	66 (51%)	30 (100%)	0.00001
CD10 positive	64 (49%)	0 (0%)	

\* The Fisher exact test statistic value is 0.00001. The result is not significant at  $p < 0.05$ .

monoclonal antibody to CD10 (clone 56C6; dilution 1:10; CELL MARQUE). Basically, 4- $\mu$ m sections from formalin-fixed paraffin-embedded specimens were cut on Poly-L-lysine coated slides. The sections then deparaffinized, dehydrated and were incubated with primary antibody at 1:10. Counterstaining with hematoxylin was done, then rinsed and mounted. Membrane and/or cytoplasmic staining was evaluated. Positive control slides of a reactive lymph node tissue known to be CD10 positive were used. Negative control (substitution of the primary antibody with Tris-buffered saline) was utilized.

**Interpretation of CD10 Immunostaining:** CD10 immunoexpression were divided as follows: Score-0 (negative staining) was given when  $<5\%$  cells were positive; Score-1 (positive), 5%–50% cells positive and Score-2 when  $>50\%$  positive cells were present. Tissue positive staining in at least 5% of targeted cells (Scores 1 and 2) was regarded as “CD10-positive”. The 5% cut off value was used as previously described.<sup>9</sup> Tissues with no or less than 5% staining of targeted cells (score 0) were regarded as “CD10-negative”.

**Statistical analysis:** The chi-squared test and the Fisher exact test were used to assess the differences between

two groups of variables. Kaplan-Meier method was used to evaluate the overall survival (OS) and disease-free survival (DFS) with the log-rank (Mantel-Cox) comparison test. DFS was calculated as the time from pathological diagnosis to the time of recurrence (or date of the last visit with disease-free status). SPSS® (IMB, NY, USA) software package, version 20 was used for statistical analyses.  $P < 0.05$  was considered statistically significant.

### RESULTS

The clinicopathological features of the cases are summarized in Table-I. Among the 130 cases, 109 were male (88.9%), and 21 (11.1%) were female. All 130 cases of bladder carcinomas were low- or high-grade urothelial type. There were 60 cases of low-grade urothelial carcinoma (46.2%) and 70 cases with high grade urothelial carcinoma (53.8%). Positive CD10 staining was observed in 64 (49%) cases of UBC and was not detected in any non-neoplastic urothelium (Fig.1 and Table-I). The immunoexpression pattern of CD10 in UBC and non-neoplastic urothelium is summarized in Table-II. There was an association between positive CD10 immunostaining and high

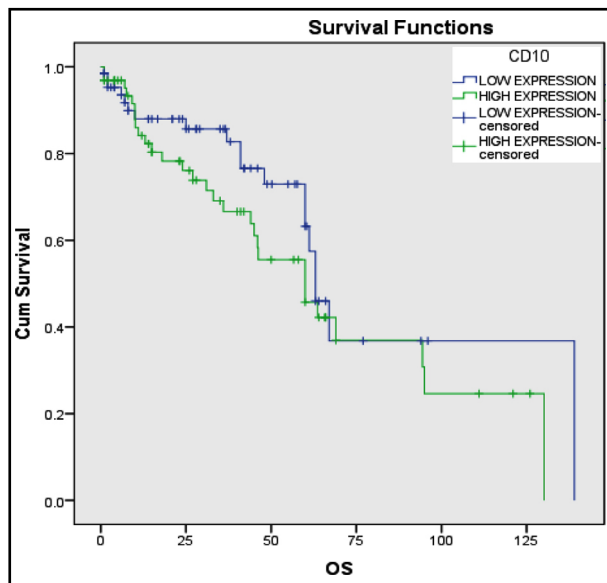


Fig.2: Overall survival curve (Kaplan Meier) in relation to CD10 immunoexpression in UBC patients. There is no association between CD10 immunostaining and OS (log rank 1.663,  $p=0.197$ ).

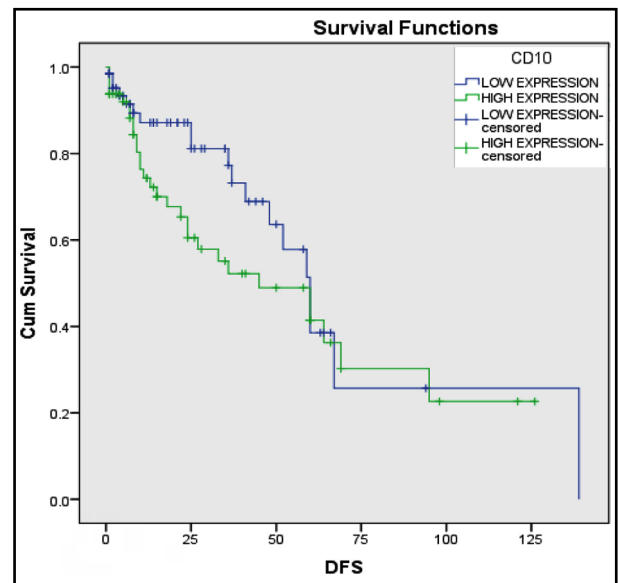


Fig.3: Disease-free survival curve (Kaplan Meier) in relation to CD10 immunoexpression in UBC patients. There is no association between CD10 immunostaining and DFS (log rank 1.637,  $p=0.201$ ).

tumor grade ( $p=0.006$ ) and muscularis propria invasion ( $p=0.007$ ), which reflect tumor stage. CD10-positive staining was identified in 36.7% and 66.7% of low and high grade tumors, respectively and in 36.5% and 61.7% of non-muscle-invasive Bladder carcinomas, T1aT1 and muscle-invasive bladder carcinoma, T2-T4. There was no association between CD10 immunoexpression and age, gender, nodal and distant metastasis, lymphovascular invasion, or tumor recurrence (Table-II). CD10 immunoexpression was not associated with the probabilities of overall survival (log rank 1.663,  $p=0.197$ ) or disease-free survival (log rank 1.637,  $p=0.201$ ) (Fig.2 and 3).

## DISCUSSION

CD10 is a membrane-associated peptidase that is related to peptide cleavage and is believed to be associated with neoplastic progression. The function of CD10 is to inactivate a number of signaling peptides. Physiologically, CD10 is highly expressed in epithelial cells of the lungs, kidneys, breast, placenta, and others. In this study, CD10 was only expressed in urothelial carcinomas and was not detected in normal urothelial mucosa. There was a strong association between CD10 immunoexpression and tumor grade and muscle invasion (but not with other clinicopathological parameters, including age, gender, nodal and distant metastasis, lymphovascular invasion, and tumor recurrence. There was no association between CD10 immunoexpression and OS or DFS.

Many studies have identified a difference in CD10 immunoexpression in tumors and non-neoplastic epithelial mucosa in different human cancers. In UBC, the results are controversial. CD10 was demonstrated to be associated with higher tumor grade in UBC,<sup>10-12</sup> as well as higher tumor stage<sup>10</sup> and lymph node metastasis.<sup>2</sup> Some studies did not find an association between CD10 immunoexpression and tumor stage,<sup>11</sup> tumor grade,<sup>2</sup> muscle invasion,<sup>2</sup> lymph node metastasis,<sup>2</sup> or vascular space invasion.<sup>2</sup> In contrast, Bircan et al.<sup>13</sup> found that CD10 was inversely correlated with tumor invasiveness and pathological stage.

The relation between CD10 immunoexpression and survival in patients with UBC has only been evaluated in three previous studies<sup>2-4</sup> and was found to be associated with shorter OS. In the present study, CD10 immunoexpression was evaluated in a relatively large number of transitional-type UBC cases to check the relation between CD10 immunoexpression and patients' survival. The results did not reveal any significant association between CD immunoexpression and OS or DFS, which contradicts other studies.<sup>2-4</sup> A limitation in two of these previous reports is the relatively small number of patients included. Further studies with more patients and longer periods of follow-up will probably shed lighter on this relationship.

The present study and most of the previous studies evaluated CD10 immunoexpression in urothelium and

not stromal cells. In the present study, no significant stromal immunoexpression was noticed. Some studies evaluated stromal CD10 immunoexpression and found no relation with tumor grade, stage, presence of lymph node or distant metastases, or survival.<sup>2</sup> In a study that compared CD10 immunoexpression in the urothelial tissues and stroma, high tumorous CD10 was associated with tumor stage and grade, while stromal CD10 was associated with younger age.<sup>14</sup> The contradiction regarding stromal immunoexpression is probably related to the different clones. Many studies revealed a relation between CD10 immunoexpression and apoptosis.<sup>15</sup> In the current study, none of the normal or reactive urothelial tissues revealed CD10 immunoexpression. The lack of immunoexpression in normal urothelial tissues indicates a possible relation between CD10 immunoexpression and urothelial malignant transformation. No previous study on CD10 immunoexpression in bladder cancer has been published in Saudi population.

CD10 has been shown to be associated with tumor progression in some tumors, like melanoma.<sup>16</sup> Epithelial immunoexpression of CD10 was found to be associated with tumor grade, stage, and lymph node invasion in colorectal cancer.<sup>17</sup> On the other hand, the stromal immunoexpression of CD10 was found to be associated with a larger tumor size in colorectal carcinoma,<sup>18</sup> lymph node metastasis, recurrence and disease-free in breast carcinoma,<sup>19-21</sup> and gastric carcinoma.<sup>22</sup>

**Limitations of the study:** This study utilized tissue microarray material, which includes representative cores of tissue. Normal or dysplastic mucosa adjacent to the tumor were not evaluated for CD10 immunoexpression. This is considered a limitation of the study.

## CONCLUSION

In conclusion, although CD10 is associated with higher tumor grade and stage, it is not associated with patient survival and cannot be used as a biomarker of poor prognosis in UBC. Further studies with a larger sample and longer follow-up period are recommended to explore the prognostic significance of CD10 in urothelial carcinoma further.

**Acknowledgments:** The author acknowledges with thank Gladys Harder, Department of Pathology, King Faisal Specialist Hospital, Jeddah, Saudi Arabia, for technical support.

**Ethical Approval:** The Research Committee of the Biomedical Ethics Unit, Faculty of Medicine, King Abdulaziz University, Jeddah, Saudi, Arabia, approved this study.

**Conflicts of Interest:** The author confirm that no part of this work has been submitted or published elsewhere and that there are no conflicts of interest.

**Funding statement:** None.

## REFERENCES

- Bazarbashi S, Al Eid H, Minguet J. Cancer Incidence in Saudi Arabia: 2012 Data from the Saudi Cancer Registry. *Asian Pac J Cancer Prev.* 2017;18(9):2437-2444. doi: 10.22034/APJCP.2017.18.9.2437
- Abdou AG. CD10 expression in tumour and stromal cells of bladder carcinoma: an association with bilharziasis. *APMIS.* 2007;115(11):1206-1218. doi: 10.1111/j.1600-0643.2007.00645.x
- Shukla SK, Chandra S, Chauhan N, Sarpal R. Expression of CD10 in urothelial carcinoma of the bladder and its correlation with histopathological grade, pathological stage, and survival of patients. *J Cancer Res Ther.* 2021;17(4):887-892. doi: 10.4103/jcrt.JCRT\_619\_18
- Hussien MT, Elsaba TM, Elkady A, Alrefai H, Hetta HF. Assessing CD 10 Expression Level and Its Prognostic Impact in Egyptian Patients with Urothelial Carcinoma. *Asian Pac J Cancer Prev.* 2020;21(6):1573-1583. doi: 10.31557/APJCP.2020.21.6.1573.
- Moch H, Ulbright T, Reuter V. WHO Classification of Tumours of the Urinary System and Male Genital Organs. Lyon, France. IARC; 2016;8(4):77-106.
- Amin MB, Edge S, Greene F, Byrd DR, Brookland RK, Washington, Gershenwald JE, et al. AJCC Cancer Staging Manual. 8th edition. New York: Springer; 2017.
- Al-Maghrabi J, Emam E, Gomaa W, Saggaf M, Buhmeida A, Al-Qahtani M, et al. c-MET immunostaining in colorectal carcinoma is associated with local disease recurrence. *BMC Cancer.* 2015;15:676. doi:10.1186/s12885-015-1662-6
- Al-Maghrabi J, Buhmeida A, Emam E, Syrjanen K, Sibiany A, Al-Qahtani M, et al. Cyclooxygenase-2 expression as a predictor of outcome in colorectal carcinoma. *World J Gastroenterol.* 2012;18(15):1793-1799. doi: 10.3748/wjg.v18.i15.1793
- Chu P, Arber DA. Paraffin-section detection of CD10 in 505 nonhematopoietic neoplasms. Frequent expression in renal cell carcinoma and endometrial stromal sarcoma. *Am J Clin Pathol.* 2000;113(3):374-382. doi: 10.1309/8VAV-J2FU-8CU9-EK18
- Bahadir B, Behzatoglu K, Bektas S, Bozkurt ER, Ozdamar SO. CD10 expression in urothelial carcinoma of the bladder. *Diagn Pathol.* 2009;4:38. doi: 10.1186/1746-1596-4-38
- Mohammed AS, Ali HH, Qasim BJ, Chaloob MK. CD10 and CA19.9 immunohistochemical expression in transitional cell carcinoma of the urinary bladder. *Urol Ann.* 2013;5(2):81-85. doi: 10.4103/0974-7796.110002
- Murali R, Delprado W. CD10 immunohistochemical staining in urothelial neoplasms. *Am J Clin Pathol.* 2005;124(3):371-379. doi: 10.1309/04BH-F6A8-0BQM-H7HT
- Bircan S, Candir O, Kapucuoglu N, Serel TA, Ciris M, Karahan N. CD10 expression in urothelial bladder carcinomas: a pilot study. *Urol Int.* 2006;77(2):107-113. doi: 10.1159/000093901
- Kumagai-Togashi A, Uozaki H, Kikuchi Y, Watabe S, Numakura S, Watanabe M. Tumorous CD10 Is More Strongly Related to the Progression of Urothelial Carcinoma than Stromal CD10. *Anticancer Res.* 2019;39(2):635-640. doi: 10.21873/anticancer.13157
- Bai M, Agnantis NJ, Skyras A, Tsanou E, Kamina S, Galani V, et al. Increased expression of the bcl6 and CD10 proteins is associated with increased apoptosis and proliferation in diffuse large B-cell lymphomas. *Mod Pathol.* 2003;16(5):471-480. doi: 10.1097/01.MP.0000067684.78221.6E
- Guanziroli E, Venegoni L, Fanoni D, Cavicchini S, Coggi A, Ferrero S, et al. Immunohistochemical expression and prognostic role of CD10, CD271 and Nestin in primary and recurrent cutaneous melanoma. *Italian J Dermatol Venereol.* 2021;156(1):68-72. doi: 10.23736/S2784-8671.18.06145-X
- Raposo TP, Comes MS, Idowu A, Agit B, Hassall J, Fadhil W, et al. CD10 inhibits cell motility but expression is associated with advanced stage disease in colorectal cancer. *Exp Mol Pathol.* 2018;104(3):190-198. doi: 10.1016/j.yexmp.2018.04.002
- Ogawa H, Iwaya K, Izumi M, Kuroda M, Serizawa H, Koyanagi Y, et al. Expression of CD10 by stromal cells during colorectal tumor development. *Hum Pathol.* 2002;33(8):806-811. doi: 10.1053/hupa.2002.125773
- Iwaya K, Ogawa H, Izumi M, Kuroda M, Mukai K. Stromal expression of CD10 in invasive breast carcinoma: A new predictor of clinical outcome. *Virchows Arch.* 2002;440(6):589-593. doi: 10.1007/s00428-002-0639-4
- Dhande AN, Sinai Khandeparkar SG, Joshi AR, Kulkarni MM, Pandya N, Mohanapure N, et al. Stromal expression of CD10 in breast carcinoma and its correlation with clinicopathological parameters. *South Asian J Cancer.* 2019;8(1):18-21. doi: 10.4103/sajc.sajc\_56\_18
- Vo TN, Mekata E, Umeda T, Abe H, Kawai Y, Mori T, et al. Prognostic impact of CD10 expression in clinical outcome of invasive breast carcinoma. *Breast Cancer.* 2015;22(2):117-128. doi: 10.1007/s12282-013-0459-1
- Huang WB, Zhou XJ, Chen JY, Zhang LH, Meng K, Ma HH, et al. CD10-positive stromal cells in gastric carcinoma: correlation with invasion and metastasis. *Jpn J Clin Oncol.* 2005;35(5):245-250. doi: 10.1093/jjco/hyi076